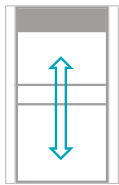


More room for working safely



High test setups require a lot of space. Distillation and walk-in fume cupboards are ideal in this regard. Distillation fume cupboards impress with a particularly low worktop; walk-in fume cupboards offer space for large devices.

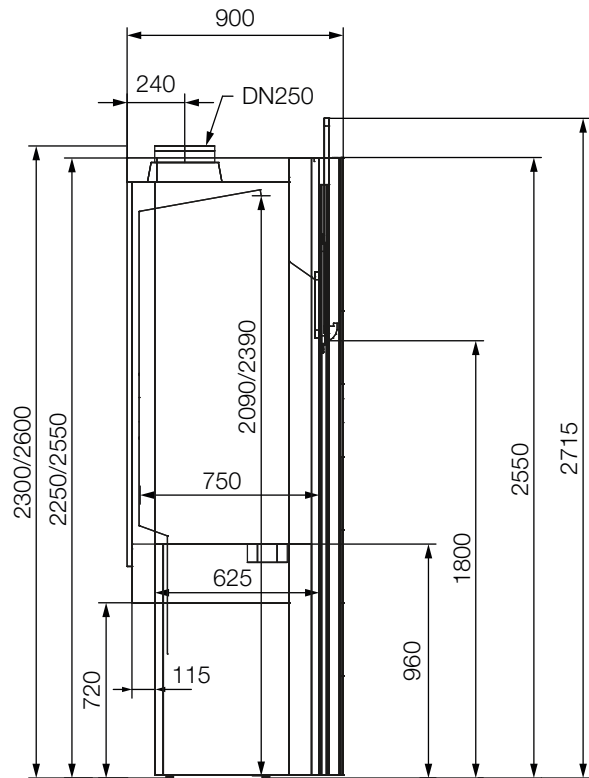


More room for working safely

- ✓ High interior for particularly large test setups
- ✓ Two-piece sash made of laminated safety glass, with single or sliding panes
- ✓ Walk-in fume cupboards are available in 3 depths



Walk-in fume cupboard - 900 mm depth

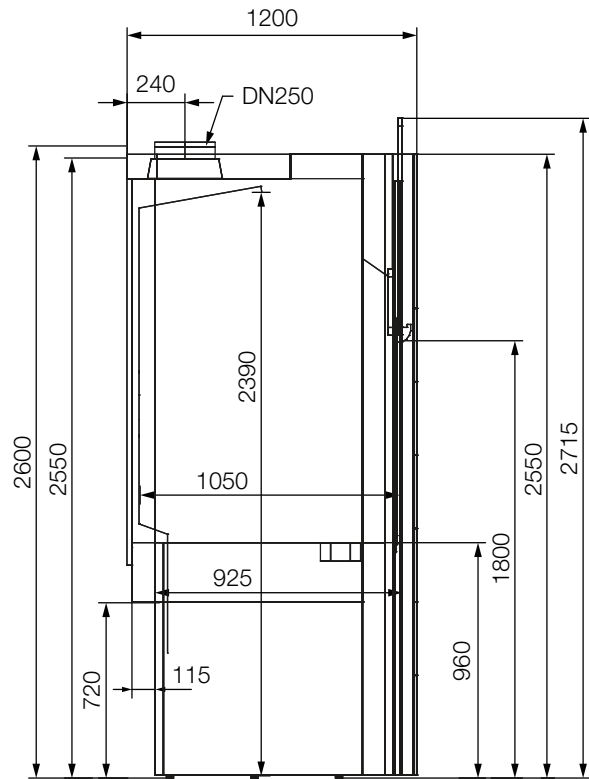


| Width | 1200 | 1500 | 1800 | 2000 | 2100 |
|---------------------------------------|-------------|-------------|-------------|-------------|-------------|
| Front height | 2550 | 2550 | 2550 | 2550 | 2550 |
| Chamber height | 2250 / 2550 | 2250 / 2550 | 2250 / 2550 | 2250 / 2550 | 2250 / 2550 |
| Depth | 900 | 900 | 900 | 900 | 900 |
| Usable space width | 910 / 1100 | 1210 / 1400 | 1510 / 1700 | 1710 / 1900 | 1810 / 2000 |
| Usable space height | 2090 / 2390 | 2090 / 2390 | 2090 / 2390 | 2090 / 2390 | 2090 / 2390 |
| Usable space depth | 625 / 750 | 625 / 750 | 625 / 750 | 625 / 750 | 625 / 750 |
| Minimal permissible volume flow rate* | 660 | 830 | 990 | 1160 | 1160 |
| Specified volume flow rate | 750 | 940 | 1120 | 1310 | 1310 |
| Maximum permissible volume flow rate | 2000 | 2000 | 2000 | 2000 | 2000 |

Dimensions [mm] / Volume flow rate [m³/h]

* Alarm value

Walk-in fume cupboard - 1200 mm depth

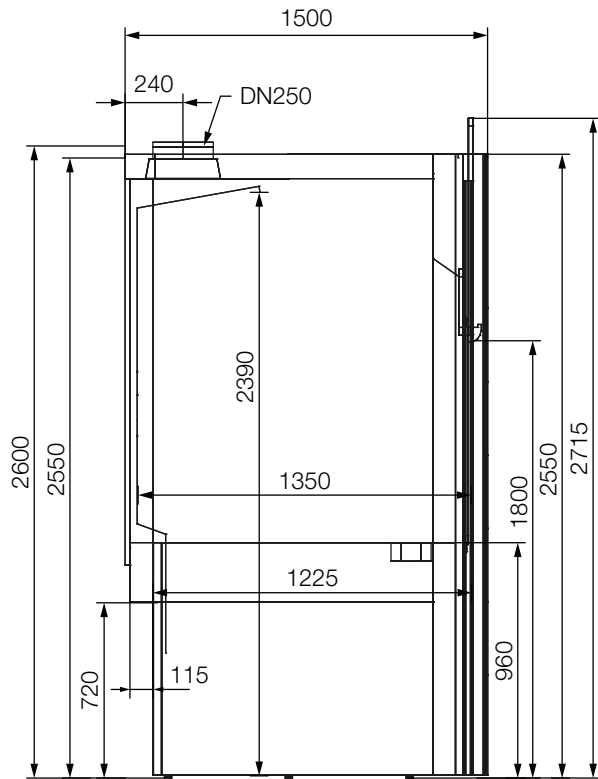


| Width | 1200 | 1500 | 1800 | 2000 | 2100 |
|---------------------------------------|------------|-------------|-------------|-------------|-------------|
| Front height | 2550 | 2550 | 2550 | 2550 | 2550 |
| Chamber height | 2550 | 2550 | 2550 | 2550 | 2550 |
| Depth | 1200 | 1200 | 1200 | 1200 | 1200 |
| Usable space width | 910 / 1100 | 1210 / 1400 | 1510 / 1700 | 1710 / 1900 | 1810 / 2000 |
| Usable space height | 2390 | 2390 | 2390 | 2390 | 2390 |
| Usable space depth | 925 / 1050 | 925 / 1050 | 925 / 1050 | 925 / 1050 | 925 / 1050 |
| Minimal permissible volume flow rate* | 720 | 900 | 1080 | 1260 | 1260 |
| Specified volume flow rate | 780 | 980 | 1170 | 1370 | 1370 |
| Maximum permissible volume flow rate | 2000 | 2000 | 2000 | 2000 | 2000 |

Dimensions [mm] / Volume flow rate [m³/h]

* Alarm value

Walk-in fume cupboard - 1500 mm depth

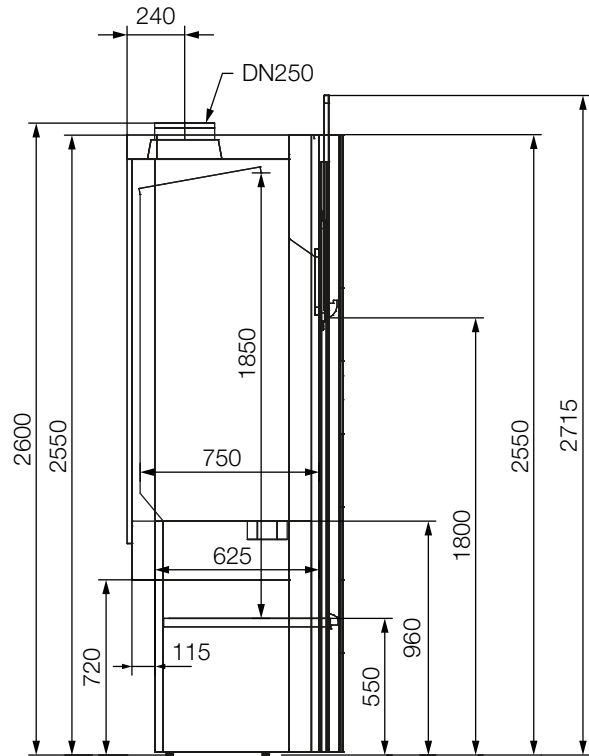


| Width | 1200 | 1500 | 1800 | 2000 | 2100 |
|---------------------------------------|-------------|-------------|-------------|-------------|-------------|
| Front height | 2550 | 2550 | 2550 | 2550 | 2550 |
| Chamber height | 2550 | 2550 | 2550 | 2550 | 2550 |
| Depth | 1500 | 1500 | 1500 | 1500 | 1500 |
| Usable space width | 910 / 1100 | 1210 / 1400 | 1510 / 1700 | 1710 / 1900 | 1810 / 2000 |
| Usable space height | 2390 | 2390 | 2390 | 2390 | 2390 |
| Usable space depth | 1225 / 1350 | 1225 / 1350 | 1225 / 1350 | 1225 / 1350 | 1225 / 1350 |
| Minimal permissible volume flow rate* | 740 | 960 | 1170 | 1390 | 1390 |
| Specified volume flow rate | 810 | 1050 | 1280 | 1520 | 1520 |
| Maximum permissible volume flow rate | 2000 | 2000 | 2000 | 2000 | 2000 |

Dimensions [mm] / Volume flow rate [m³/h]

* Alarm value

Distillation fume cupboard

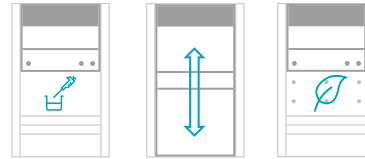


| Width | 1200 | 1500 | 1800 | 2000 | 2100 |
|---------------------------------------|------------|-------------|-------------|-------------|-------------|
| Front height | 2550 | 2550 | 2550 | 2550 | 2550 |
| Chamber height | 2600 | 2600 | 2600 | 2600 | 2600 |
| Depth | 900 | 900 | 900 | 900 | 900 |
| Usable space width | 910 / 1100 | 1210 / 1400 | 1510 / 1700 | 1710 / 1900 | 1810 / 2000 |
| Usable space height | 1850 | 1850 | 1850 | 1850 | 1850 |
| Usable space depth | 625 / 750 | 625 / 750 | 625 / 750 | 625 / 750 | 625 / 750 |
| Work height | 550 | 550 | 550 | 550 | 550 |
| Minimal permissible volume flow rate* | 600 | 750 | 900 | 1050 | 1050 |
| Specified volume flow rate | 630 | 790 | 950 | 1110 | 1110 |
| Maximum permissible volume flow rate | 1500 | 1500 | 1500 | 1500 | 1500 |

Dimensions [mm] / Volume flow rate [m³/h]

* Alarm value

Fume cupboards for general use



When selecting a fume cupboard, the most important considerations are the activities you do and the substances you use.

| | Suitable | Occasional use | Not suitable |
|-----------------------------------|----------|----------------|--------------|
| Organic solvents | x | | |
| Weak acids | x | | |
| Diluted inorganic acids | x | | |
| Cold concentrated inorganic acids | | x | |
| Hot concentrated inorganic acids | | | x |
| Hydrofluoric acid | | | x |
| Radioactive substances | | | x |
| High thermal load | | | x |